

Instant photo-movies on your phone.

muveeShow software lets you instantly create fun, stylish photo movies – we call them *muvees* – on your Windows Mobile Pocket PC or smartphone.

With just a click, muveeShow automatically sets your pictures in motion to music - with a good dash of style - so you can enjoy and share them in a more exciting way!

Step 1: Installing muveeShow

1. Locate the email confirming your purchase of muveeShow. If it's not in your Inbox, check your bulk or spam folders in case it got accidentally filtered.
2. The email will contain a link to download the muveeShow application. You can either:
 - a. download the installer to your PC or
 - b. access the link from your smartphone to install muveeShow directly onto your mobile device.
3. If you're installing muveeShow from your PC, first connect your Pocket PC or smartphone to your PC, then launch the installer to synchronize and install muveeShow on your mobile device.
4. Selection and navigation on your Pocket PC is done by tapping on the screen at the respective menu options.
5. Selection and navigation on smartphones is done with a 5-way navigation button. The left softkey and right softkey should be used for the items on the menu bar.

Step 2: Making a muvee

Launch muveeShow on your Windows Mobile device and select the pictures you'd like to use in your muvee.

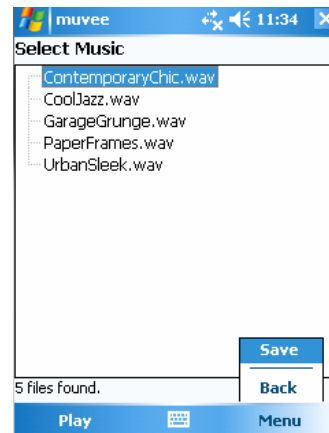
By default, muveeShow displays pictures from your device's main memory, under the 'My Documents' folder. If you wish to select pictures from your storage card, click **Menu > Scan Storage Card**.

Click **'Next'** to select a style.

Styles are templates that let you create a variety of unique muvees – from grungy music videos to chic slideshows. Each style contains a set of visual effects, graphics and music, which are applied to your pictures to create your muvee.

If you like, you can use your own music (WAV format) by clicking on **Menu > Change Music**. Your music tracks will be displayed from your device's main memory, under the 'My Documents' folder and all folders on your device's storage card. Select the track you want and click **Menu > Save**.

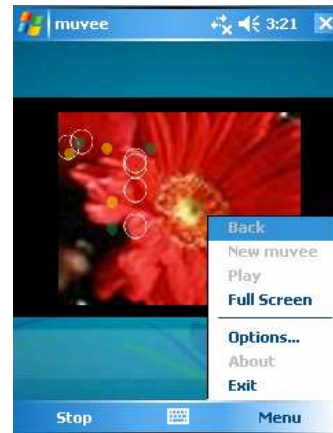
Click **'Next'** to automatically create and preview your muvee.



You can experiment with different styles and music.

To select a different style, click **Menu > Back** and choose another style.

To select different pictures, click **Menu > New muvee**.



Step 3: Saving and sharing your muvee

Click **'Save'** once you're satisfied with your preview.

By default, muveeShow saves your muvee in your device's main memory, under the **'My Documents/muvee'** folder.

If you prefer to save your muvee in your device's storage card, click **Menu > Options** and select **'Memory Card'** from the **'Save To'** drop down list.

You're done! You can now enjoy muvees on your Windows Mobile device or share them with friends and family via email.

